

Lifebell

PERVIGILANT INOPINATUM

Lockdown school, open up possibilities.

Lifebell is the combined communications system for helping save life in critical incidents. And ...even if it's never used in a real emergency, you'll find the system useful in everyday life.

Designed for ultra-efficient alerting across wide sites, then providing continuous communication and control, Lifebell utilises latest IP technology available in public address, CCTV and door access control. Avoiding invasive new cabling installation by using existing data ports, this is often ideal for architecturally sensitive buildings.



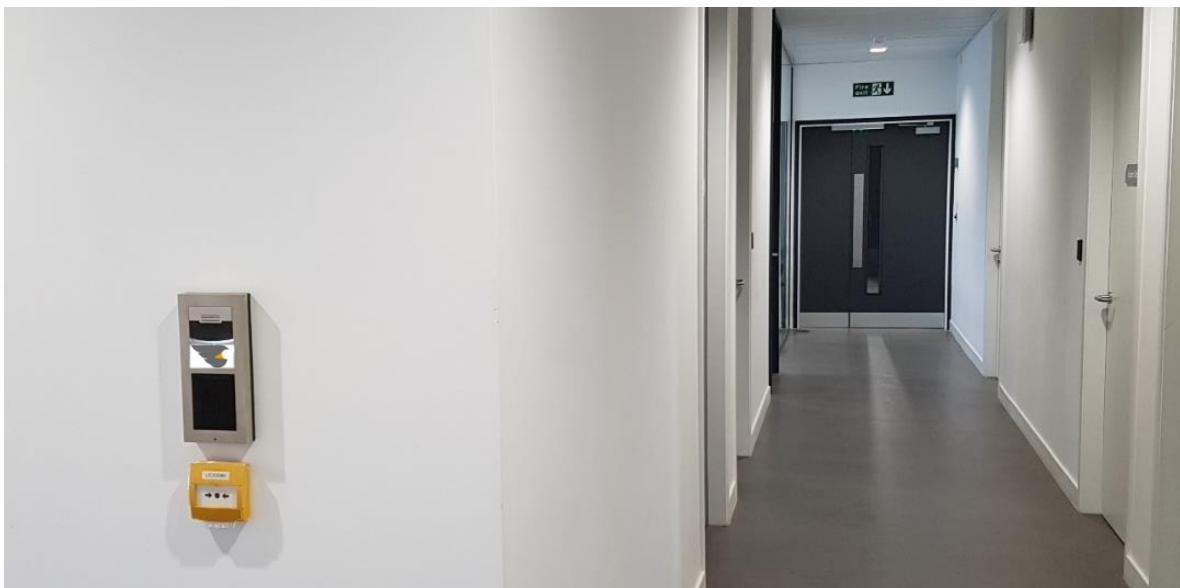
Prevention

The deterrent that a security system represents is a most important “prevention” aspect that should be focused on “before a cure”, and you may never know how much trouble you have saved yourself and your organisation by simply appearing well-prepared. Displaying the fact that **this is a Lifebell site** could be enough to thwart an attack in the planning stages. A site which clearly shows it uses up-to-date lockdown alerting, CCTV and physical protection systems presents a less-desirable target.



Alerting

Schools and colleges can be big places. Multiple buildings on spread out sites and kilometres of corridors means raising an alarm could waste vital minutes in an attack situation. An instantly recognisable sitewide warning is needed, which must be totally distinct from the fire alarm. Colour-coded lockdown break glass points allow an initial alert to be raised from anywhere in the premises. These can be coupled with intercom help points for quick explanation of the reason for the alarm.



Communication

Through a dedicated help point, a video call or voice call is activated immediately with the central command post. **Two-way speech** and optional video call can be established at once with the office, where the nature of the problem can be quickly assessed, and the lockdown alert raised to full 'red alert' status if needed. At times, a silent lockdown is more appropriate, and schools can choose to delay the initial bell until the office have decided whether to send out messaging to computer screens instead. No two solutions are exactly the same and Lifebell has the flexibility to adapt itself to your bespoke designs that site-specific conditions dictate.

Locking and Screening

A trigger from Lifebell handsets can instantly lock pre-selected doors to seal off buildings from being accessed by an intruder. This **access control** system integration has day-to-day uses too, and can be useful for time and attendance, door status monitoring and restricting entry to rooms before or after certain teaching hours.

Further triggers to motorised door and window screens, and deactivation of electromagnetic door hold back devices can ensure that students are kept out of sight and within sealed zones, effectively robbing an attacker of them as targets.

Public Address System

The handset in the office has a pre-set button which operates a site-wide announcement or special warning tone, giving everyone the command to adopt the school's pre-practiced lockdown procedure. The extra vital seconds this rapid and accurate alerting gives to students and staff to adopt the school practiced lockdown positions or "Run- Hide-Tell" policy is the most beneficial feature of the system. Properly used, it reduces the target to virtually zero. The buildings appear to be empty and motionless within seconds of the initial alert.



Incident Control

In the event of an incident the public address system is used to maintain control, stop false reports or panic spreading and give updated information to personnel. This is particularly important in a dynamic lockdown where certain areas need to be held in lockdown longer than others.

Everyday Use

Features such as the PA system doubles up as a lesson change bell and the IP speakers are great for music, announcements etc. There are other possibilities opened up too – access control systems are used for site management, lockdown screens used as blinds for sunlight glare control and so on.

Lockdown my premises.

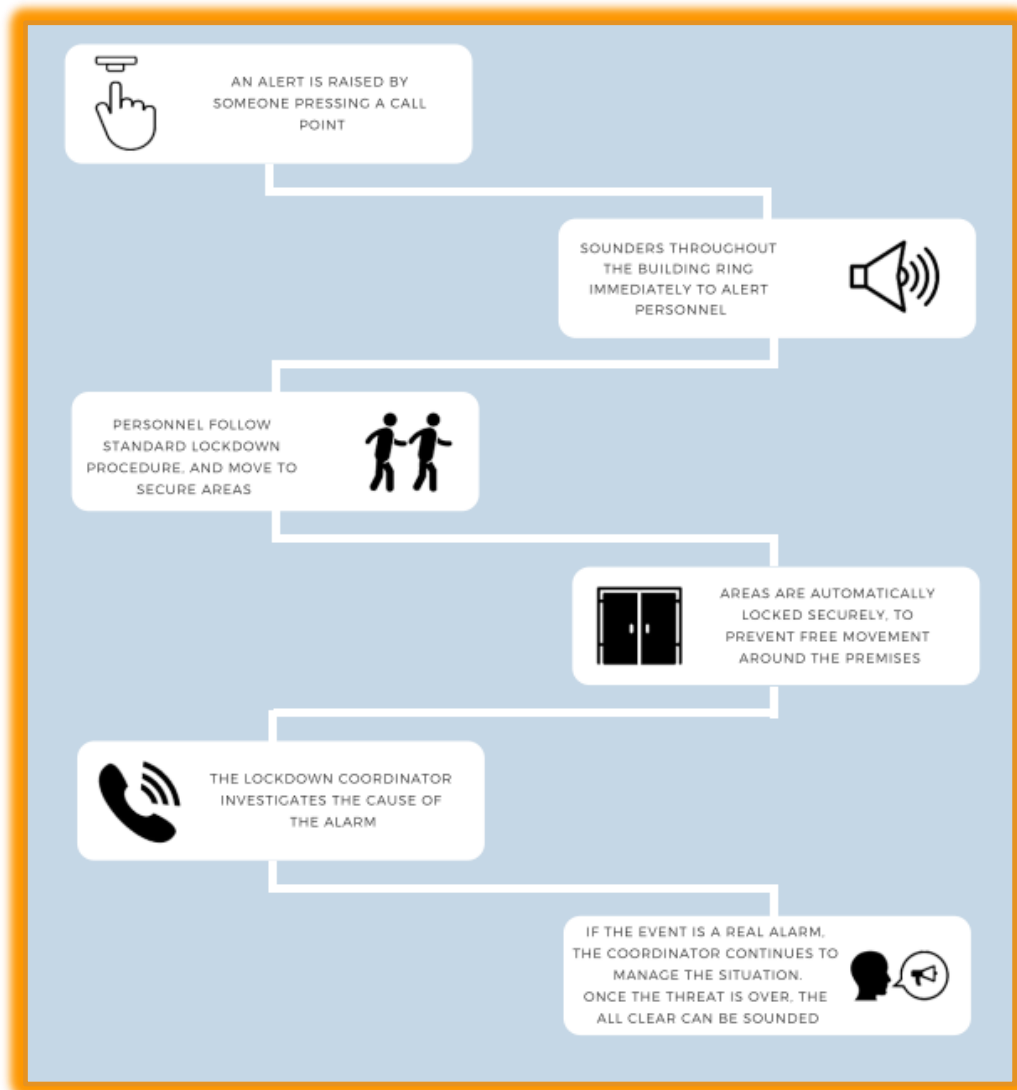
Open up my possibilities.



Lifebell is a registered trademark and brand of Anchor Sound & Security who have been serving the education sector for nearly **40 years**. The goose icon? -That's inspired by the geese of Juno's temple (in even more ancient history), which raised an alarm and saved the Roman from attack through their constant readiness. Lifebell clients of today wisely maintain the same *Pervigilant inopinatum* – An unceasing watch for the unexpected.



How it works:



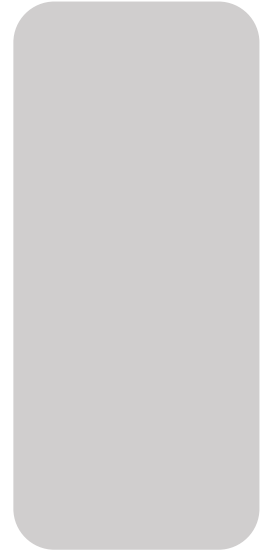
Information/Demo t: 0330 223 0491 e: sales@lifebell.co.uk



My Enquiry

Send to email: sales@lifebell.co.uk

Office use



Organisation:

Address:

.....

Postcode:

Contact Name:

Position:

Email:

Telephone:

Please arrange for a Lifebell assessment for my organisation

I wish to request a demonstration of Lifebell systems

I am interested in Lockdown and want more information

Other (state):

.....

.....

Thank you for your enquiry.



Lifebell,
a life saver